



## AluFix and EcoAs

Economical system solution  
for hand-set formwork



## AluFix and EcoAs – a powerful duo

# Cost-effective hand-set formwork by MEVA

The crane-independent AluFix and EcoAs formwork systems excel by their wide-ranging technical features and high standard of workmanship while offering exceptional value for money.

The mutual compatibility of the two systems creates enormous scope for flexible formwork applications that are capable of accommodating fresh concrete pressures of up to 50 kN/m<sup>2</sup>.

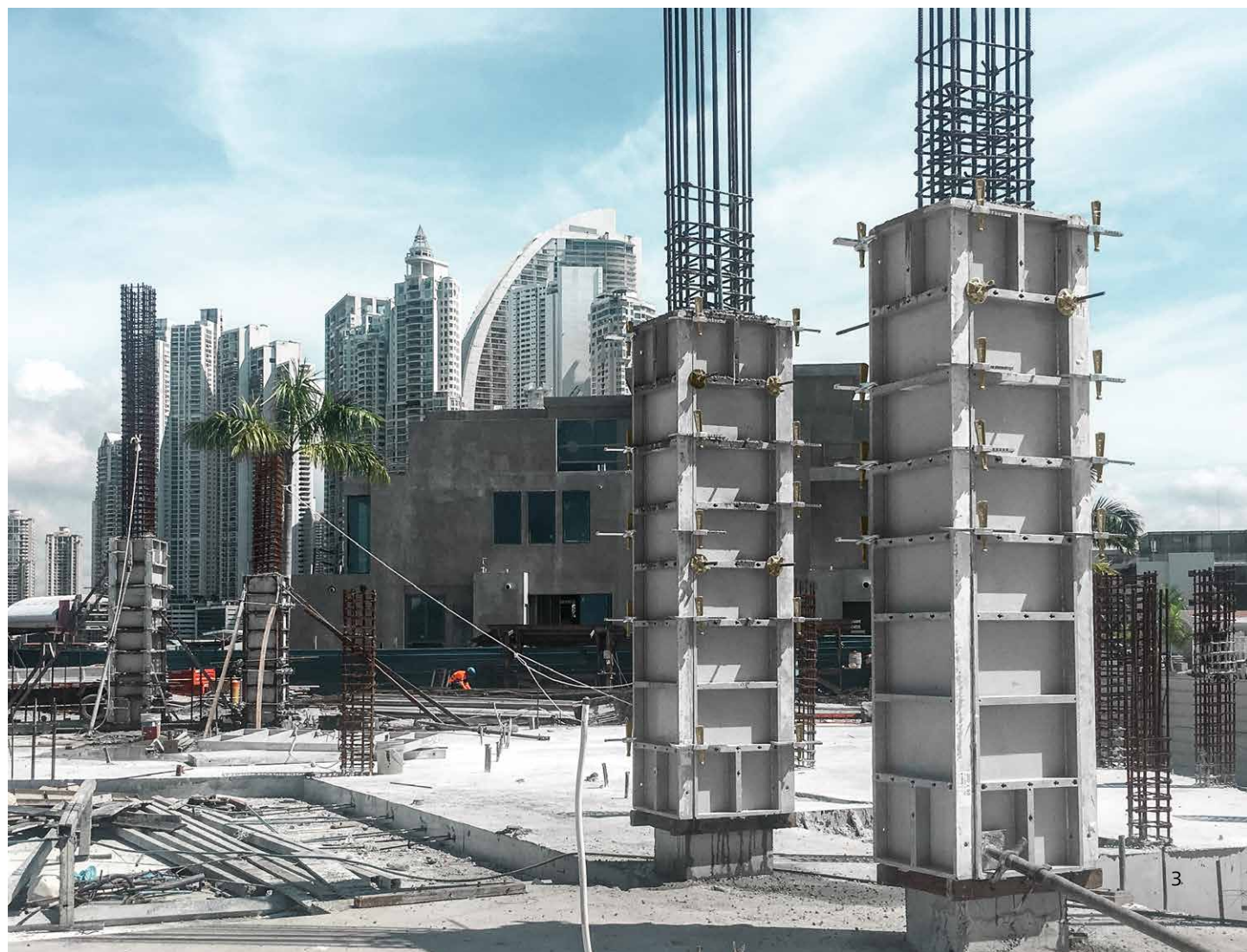
## AluFix – lightweight hand-set formwork

The modular aluminium system impresses by its optimum height increments for efficient shuttering without vertical extension.



## EcoAs – robust hand-set formwork

The crane-independent steel system impresses by its wide range of panel sizes and cost-effective column panels.



## AluFix – lightweight hand-set formwork

# Efficient building construction

## Uncompromising formwork performance

AluFix is the product of choice for crane-free assemblies that are required to deliver top-class results. At the same time, the wide range of panel sizes is ideal for accommodating the various requirements and applications encountered across the globe.

AluFix is a convincing solution for

- residential schemes
- commercial schemes
- civil engineering projects
- municipal and infrastructure schemes
- garden architecture and landscaping projects

	Panel width [cm]					Corner panels					Fillers	
	90	75	55	40	25	IC	OC	HIC	HOC	SC	FS	
Heights [cm]	350	■	■	■	■	■	■			■	■	
	300		■	■	■	■	■			■	■	
	270	■	■	■	■	■	■			■	■	
	250	■	■	■	■	■	■			■		
	150	■	■	■	■	■	■	■	■	■		
	135	■	■	■	■	■	■	■	■	■		

IC Inside corner, side length 25 cm  
 OC Outside corner  
 HIC Hinged inside corner, side length 30 cm

HOC Hinged outside corner, side length 7.5 cm  
 SC Stripping corner, side length 25 cm  
 FS Filler strip, 1 and 2 cm (alkus)



**i**

## Simply smart

### → Flexibility

- Panel heights 350, 300, 270, 250, 150 and 135 cm and only 5 panel widths for problem-free corner solutions with any wall thickness

### → Capacity

- Permissible fresh concrete pressure (DIN 18218) over full surface of 50 kN/m<sup>2</sup> (flatness tolerances to DIN 18202, Tab. 3, Line 6)

### → Versatility

- Ideally suited for a diversity of functions
- For refurbishment projects

### → Crane-independent

### → Closed hollow aluminium profile

- With ergonomic grip profile
- Robust
- High-grade powder-coated finish
- Impact- and scratch-resistant surface
- Easy to clean

### → Smart multi-function profile

- With welded-in Dywidag nuts
- All accessories, e.g. brackets, push-pull props and alignment rails, attached with MEVA flange screw

### → Intelligent MEVA product design

- MEVA assembly lock for structurally continuous connection with only a few hammer blows
- High-quality alkus all-plastic facing with long-term, 7-year warranty

### → Compatibility with EcoAs



Used in combination with the AluFix prop head and EuMax props, AluFix also offers a flexible and efficient slab formwork solution.



Moreover, foundations or small walls can be quickly and easily cast without conventional tying components through the use of foundation tape connected to the panels by foundation tensioners. The formwork assembly is dry-tied at the top using the tie claw 23.



Fitted with the alkus all-plastic facing, AluFix delivers impressive results to meet the highest fair-faced concrete requirements.

## AluFix and EcoAs

# A wall full of ideas

### MEVA quality in every detail

MEVA systems excel by their supreme standards of quality, efficiency and practical detailing. And the lightweight AluFix hand-set formwork and robust EcoAs hand-set formwork are no exception. With standardised system components, a minimum of accessories and a closely tailored product range, they combine all the features that make MEVA systems the unbeatable solution for practical on-site operations.

- Full compatibility
- Combinable with MEVA accessories



#### Flange screw

Single component for strong connection of all accessories

#### Multi-function profile

Made from closed hollow aluminium profiles with welded-in DW 15 nuts for rapid, structurally continuous connection of accessories



#### Tie rod holder

For fixing to multi-purpose profile of upright or horizontal AluFix panels. For fast and safe transportation on site

#### High-grade powder-coated finish

To facilitate cleaning and reduce concrete adhesion

#### Closed hollow profile

For high stability and long service life

### Ergonomic grip profile

Stable, closed hollow aluminium profile

### Tie hole

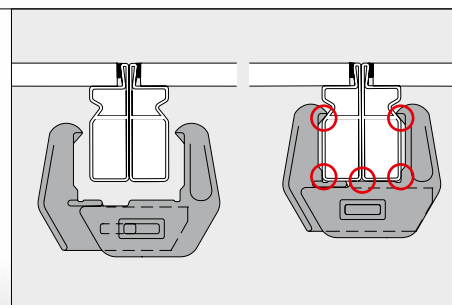
With conical anchor sleeve, welded-in from both sides

### Multi-function profile

Made from closed hollow steel profiles with welded-in DW 15 nuts for rapid, structurally continuous connection of accessories

### Hot-dip galvanised frame

With surface finish to facilitate cleaning and reduce concrete adhesion



### EA assembly lock

Only one component is needed for rapid, reliable panel connection: the MEVA assembly lock. Allows single-handed fitting at any position along frame. A few hammer blows suffice to achieve strong, level, stepless panel connection.



### alkus all-plastic facing

No water absorption. Resistant to swelling and shrinkage. The smooth, robust surface guarantees a high-quality concrete finish, even after heavy use.

## EcoAs – robust hand-set formwork

# The efficient route to best results

### Versatile modular system

EcoAs offers a flexible and cost-effective means of tackling irregular floorplans and geometries. Being suitable for crane-free use, the efficient hand-set formwork saves time and cuts labour costs.

The compact, ergonomic design of all panels allows them to be set by hand. At the same time, EcoAs is fully compatible with the lightweight AluFix hand-set formwork. EcoAs column panels are quickly joined together using a smart combination of tensioning screw and flange nut to provide a strong connection. The smooth, non-absorbent alkus facing is capable of meeting the highest fair-faced concrete requirements, even for columns.

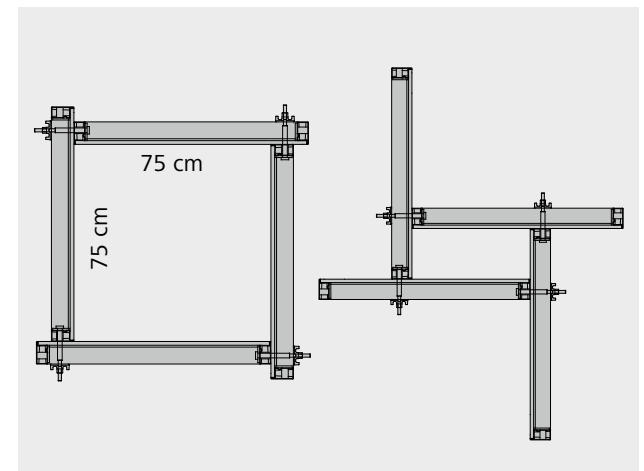
	Panel width [cm]								CP	MPP	Corner panels				Fillers
	100	80	55	50	45	40	30	25			IC	OC	HIC	HOC	FS
Heights [cm]	350								■						■*
	300	■	■	■				■	■		■	■			■*
	240		■	■	■	■		■			■	■	■	■	■
	160		■	■	■	■		■			■	■			
	150								■						
	120		■	■	■	■	■	■		■	■	■	■	■	■
	80					■									

CP Column panel, width 90 cm  
MPP Multi-purpose panel, width 60 cm  
IC Inside corner, side length 25 cm  
OC Outside corner

HIC Hinged inside corner, side length 30 cm  
HOC Hinged outside corner, side length 7.5 cm  
FS Filler strip, 5 cm  
\* Filler strip, 1 and 2 cm (alkus)



By using inside and outside corners as well as continuously adjustable hinged corners, it is possible to form all angles between 0° and 180°.



Inch-perfect shuttering for column cross-sections in 5 cm increments up to max. 75 x 75 cm side length – with few components while meeting the highest fair-faced concrete requirements.

## Simply smart

### → Flexibility

- Panel heights of 350 to 80 cm, panel widths of 100 to 25 cm for problem-free corner solutions with any wall thickness

### → Column panels

- Inch-perfect shuttering for column cross-sections in 5 cm increments up to max. 75 x 75 cm side length, with smooth, non-absorbent alkus all-plastic facing to meet the highest fair-faced concrete requirements

### → Capacity

- Permissible fresh concrete pressure (DIN 18218) over full surface of 50 kN/m<sup>2</sup> (flatness tolerances to DIN 18202, Tab. 3, Line 6)

### → Crane-independent

### → Closed hollow steel frame profile

- Structurally robust
- Torsion-proof
- Hot-dip galvanised to facilitate cleaning and reduce concrete adhesion

### → Smart multi-function profile

- With welded-in Dywidag nuts
- All accessories, e.g. brackets, push-pull props and alignment rails, attached with MEVA flange screw

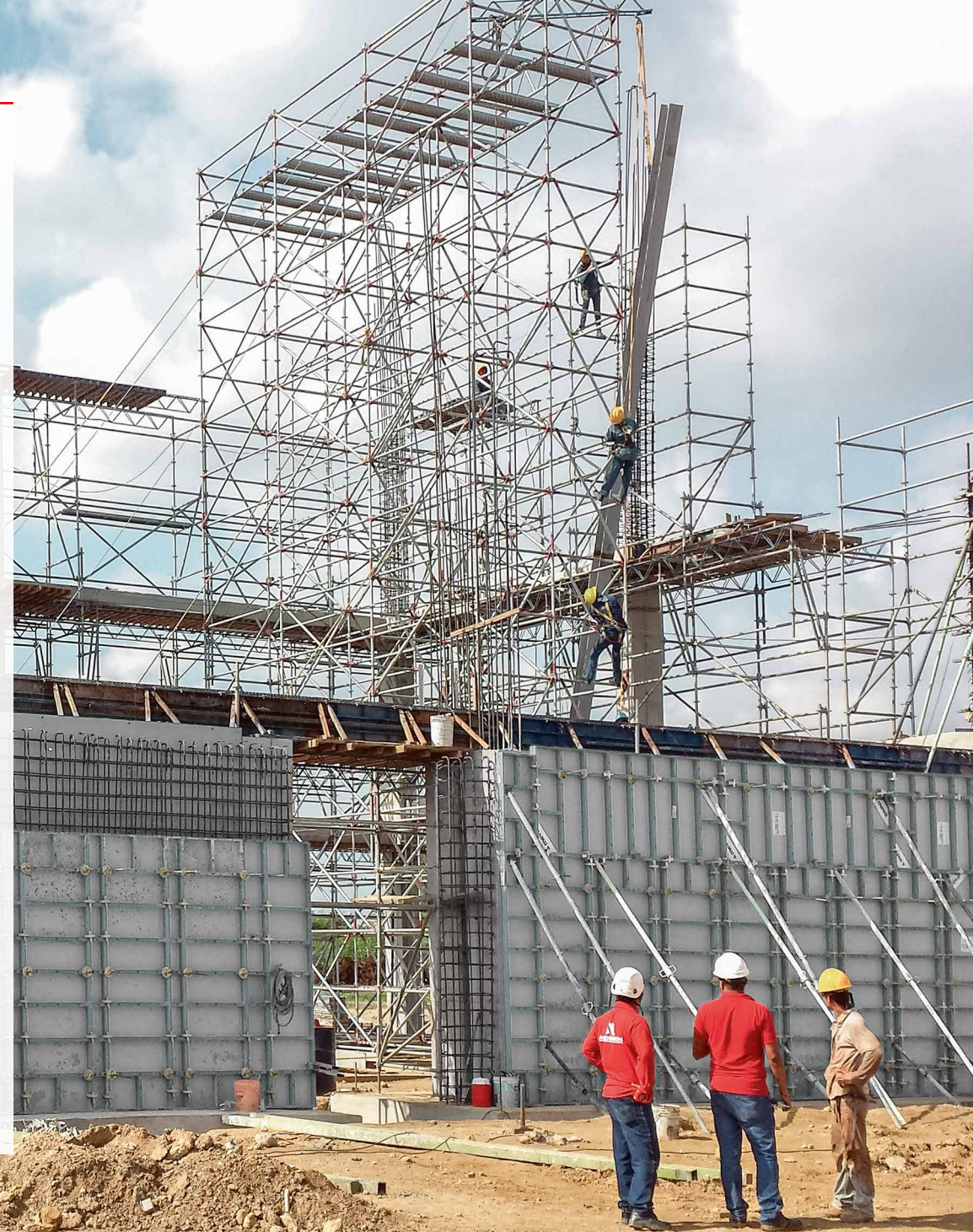
### → Tying for inclined or stepped-level formwork

- Tie hole with conical steel anchor sleeve, welded-in from both sides

### → Intelligent MEVA product design

- MEVA assembly lock for structurally continuous connection with only a few hammer blows
- High-quality alkus all-plastic facing with 7-year warranty

### → Compatibility with AluFix



## Pioneer and trendsetter

# More with MEVA

Formwork. Simple. Smart.

A lot of things that are now considered to be standard in the formwork industry were developed by MEVA in Haiterbach. As a trendsetter for the entire industry, we work day in and day out with great élan to make formwork even safer, more efficient and easier to use for the end user. For us, the excellent quality of our products and technology is a matter of course.

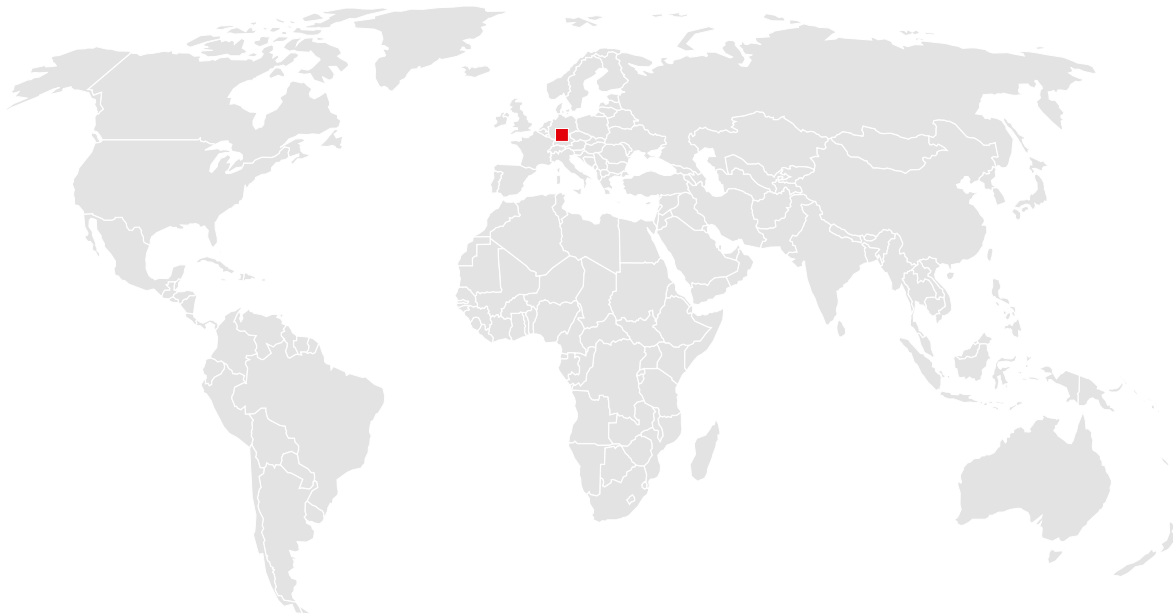
We are independent, family-run and committed to the values of a medium-sized company in everything we do. That is why our customers may rightly expect not only technologically superior products but also comprehensive, personal commitment to projects all around the world.

Complex special formwork or economical standard formwork: Our experience and wide range of products make us a service partner with strong consulting skills, even for the sophisticated challenges construction professionals have to master nowadays.



# You can rely on us wherever you are.

With 40 offices on 5 continents, we are  
on the spot wherever you need us.



## Headquarters (Germany)

---

MEVA Schalungs-Systeme GmbH  
Industriestrasse 5  
D-72221 Haiterbach  
Tel. +49 7456 692-01  
Fax +49 7456 692-66

[info@meva.net](mailto:info@meva.net)  
[www.meva.net](http://www.meva.net)

## Subsidiaries/international bases

---

A-Pfaffstätten	Tel. +43 2252 20900-0	LATAM	<a href="mailto:latam@meva.net">latam@meva.net</a>
AUS-Adelaide	Tel. +61 8 82634377	MA-Casablanca	Tel. +212 684-602243
Benelux, Gouda	Tel. +31 182 570770	MAL-Perak	Tel. +60 12 5209337
BH-Riffa	Tel. +973 3322 4290	N-Oslo	Tel. +47 67 154200
CDN-Toronto	Tel. +1 416 8278714	PA-Panama City	Tel. +507 2372222
CH-Seon	Tel. +41 62 7697100	PH-Manila	Tel. +63 998 5416975
DK-Køge	Tel. +45 56 311855	QA-Doha	Tel. +974 4006 8485
F-Sarreguemines	Tel. +33 387 959938	SA-Dammam	Tel. +966 582 144144
GB-Tamworth	Tel. +44 1827 60217	SGP-Singapore	Tel. +65 67354459
H-Budapest	Tel. +36 1 2722222	UAE-Dubai	Tel. +971 4 3411180
IND-Mumbai	Tel. +91 22 27563430	USA-Springfield	Tel. +1 937 3280022



### MEVA Schalungs-Systeme GmbH

Industriestrasse 5      Tel. +49 7456 692-01  
72221 Haiterbach      Fax +49 7456 692-66  
Germany                [info@meva.net](mailto:info@meva.net)

[www.meva.net](http://www.meva.net)